

CITY OF ROWLETT

Floodplain Map

Please submit changes or corrections to:
City of Rowlett Geographic Information Systems (GIS)
3901 Main Street, Rowlett, Texas 75088
Phone (972) 412-6133; Fax (972) 412 6228
Email: gis@ci.rowlett.tx.us
Or visit us on the web at
http://www.ci.rowlett.tx.us/Rowlett/Departments/GIS

August 2007

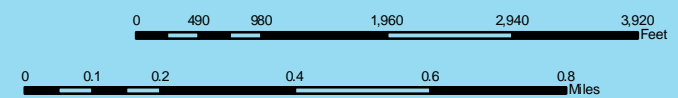
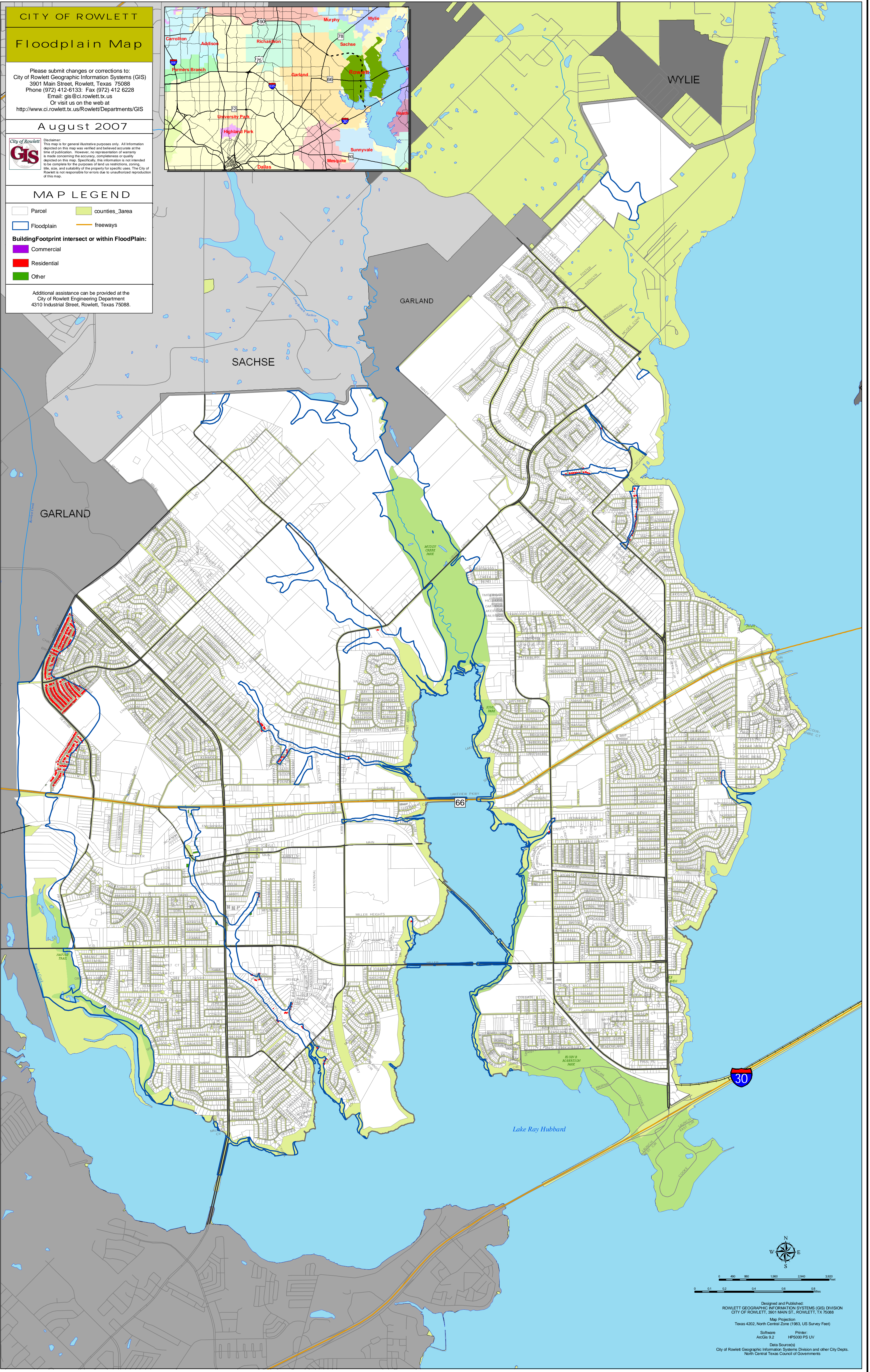
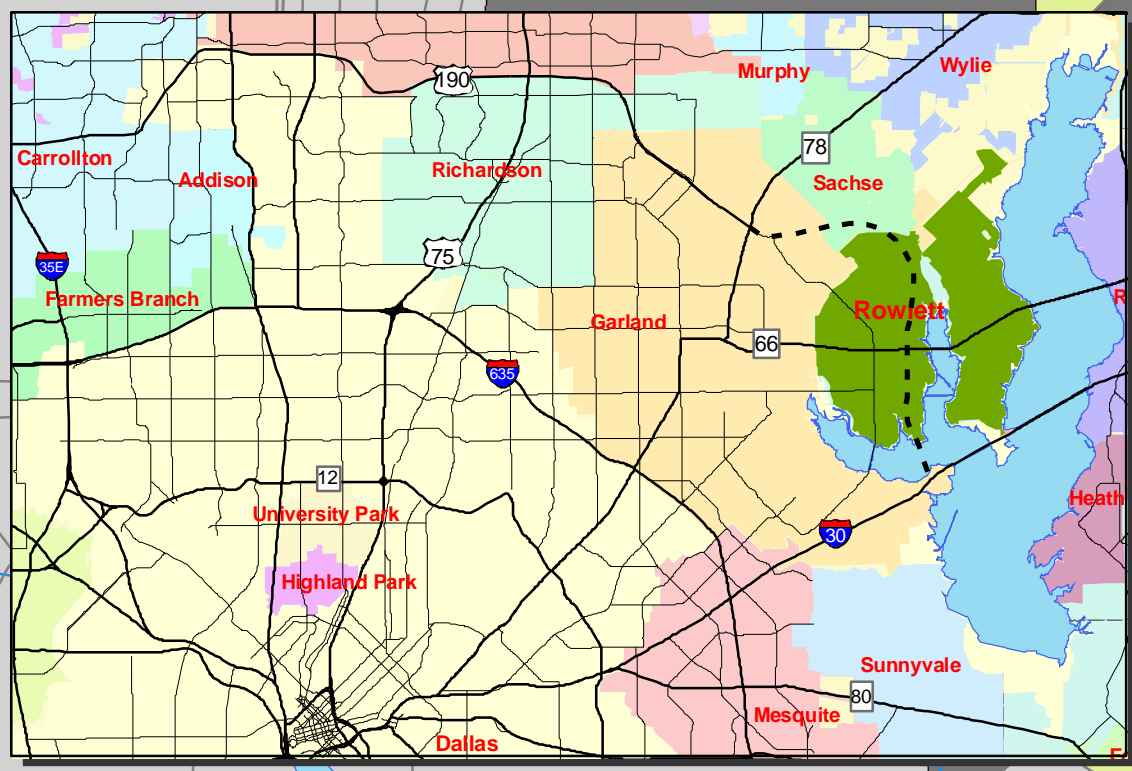


Disclaimer: This map is for general illustrative purposes only. All information depicted on this map was verified and believed accurate at the time of publication. However, no representation of warranty is made concerning the accuracy, completeness or quality depicted on this map. Specifically, this information is not intended to be complete for the purposes of land use restrictions, zoning, title, size, and suitability of the property for specific uses. The City of Rowlett is not responsible for errors due to unauthorized reproduction of this map.

MAP LEGEND

- Parcel
- Floodplain
- Commercial
- Residential
- Other
- counties_3area
- freeways

Additional assistance can be provided at the
City of Rowlett Engineering Department
4310 Industrial Street, Rowlett, Texas 75088.



Designed and Published:
ROWLETT GEOGRAPHIC INFORMATION SYSTEMS (GIS) DIVISION
CITY OF ROWLETT, 3901 MAIN ST., ROWLETT, TX 75088
Map Projection
Texas 4202, North Central Zone (1983, US Survey Feet)
Software ArcGIS 9.2 Printer: HP5000 PS LV
Data Source(s)
City of Rowlett Geographic Information Systems Division and other City Depts.
North Central Texas Council of Governments